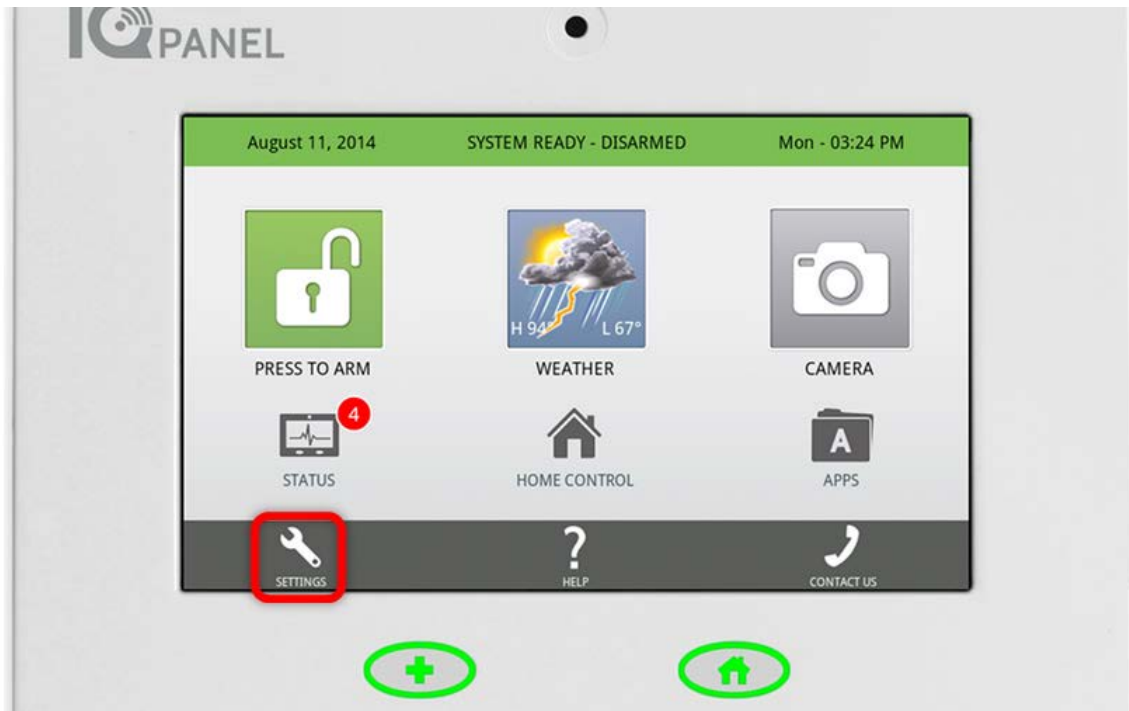




Qolsys IQ Panel – Battery Replacement Guide

To replace the battery in your IQ panel, we'll need to power the panel down.

1. Select "Settings"



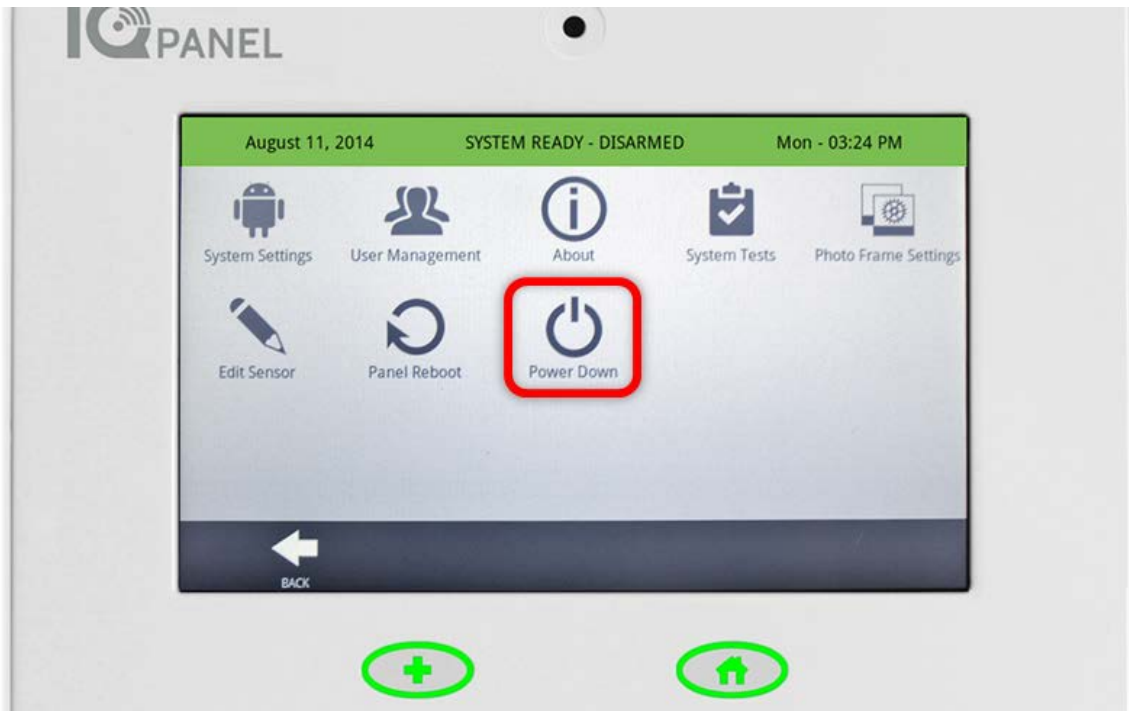
2. Enter your "**Master Code**"



Qolsys IQ Panel – Battery Replacement Guide



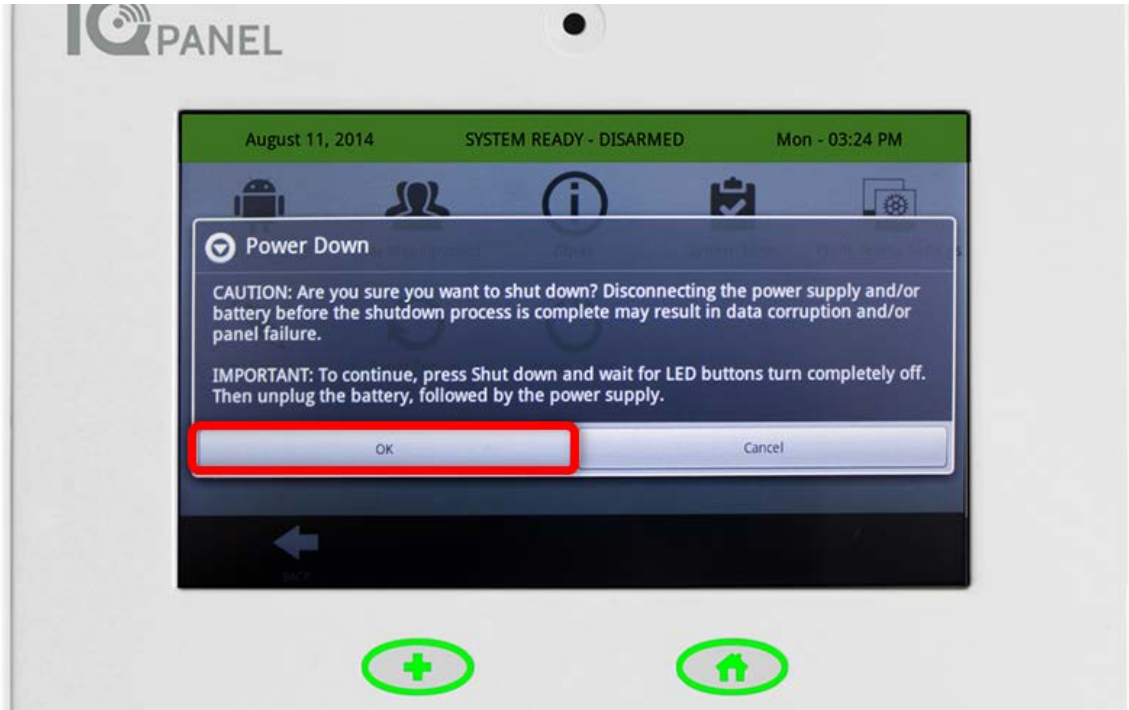
3. Select **"Power Down"**



4. Select **"OK"**



Qolsys IQ Panel – Battery Replacement Guide



5. Before continuing, wait till the display and the red LEDs turn off. (Note: Disconnecting the power supply or battery before the shutdown process is complete may result in data corruption or panel failure. Make sure to follow the step-by-step instructions EXACTLY.)



6. Now it's time to open the panel, start by removing the screw on the back of the panel.



Qolsys IQ Panel – Battery Replacement Guide



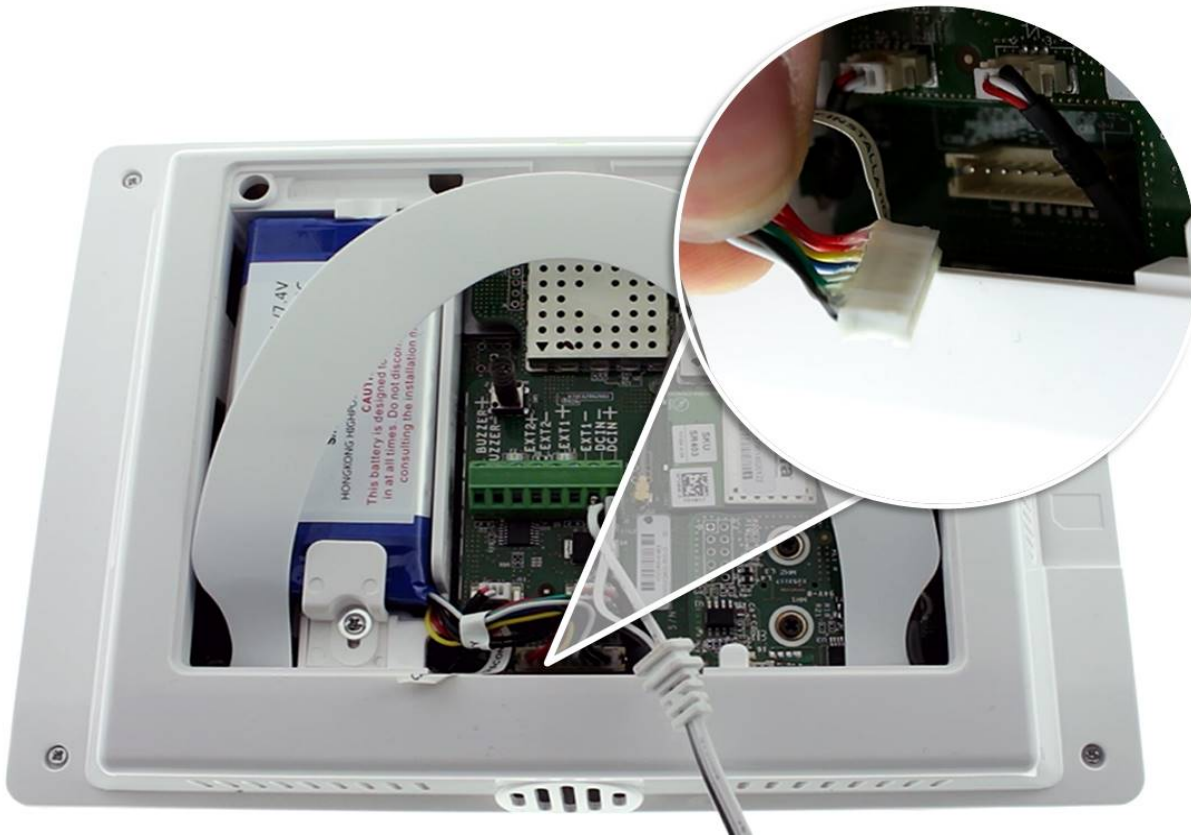
7. Remove the back mounting plate.



8. Disconnect the wire coming from the blue battery pack.



Qolsys IQ Panel – Battery Replacement Guide



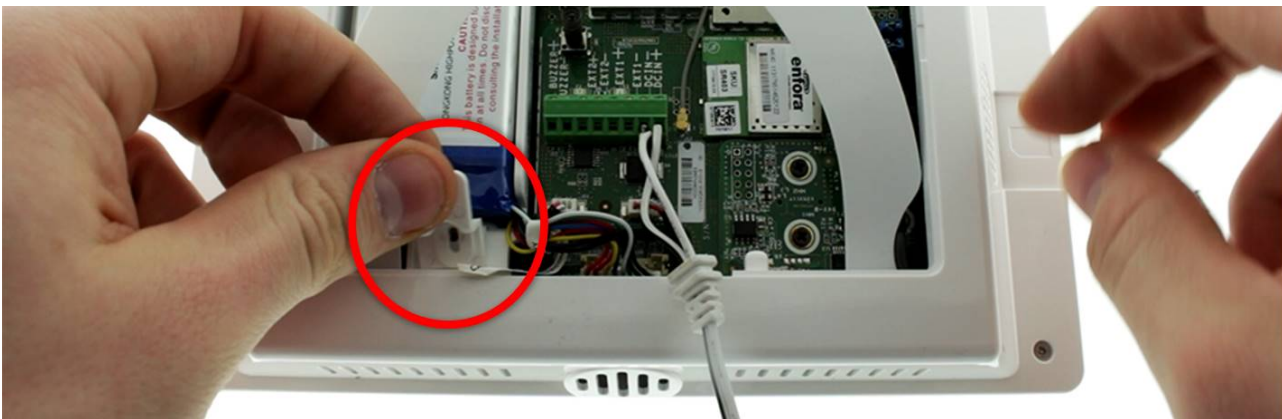
9. Remove the screw on the white battery tab.



Qolsys IQ Panel – Battery Replacement Guide



10. Remove the white battery tab.



11. Place a screwdriver underneath the battery pack and pry the battery out of it's compartment.

Qolsys IQ Panel – Battery Replacement Guide



13. Re-apply the back mounting plate to the panel.





Qolsys IQ Panel – Battery Replacement Guide

14. Re-Insert the screw to the back of the panel.



You're done! If the display is still blank, disconnect and reconnect the AC power from your outlet.
